



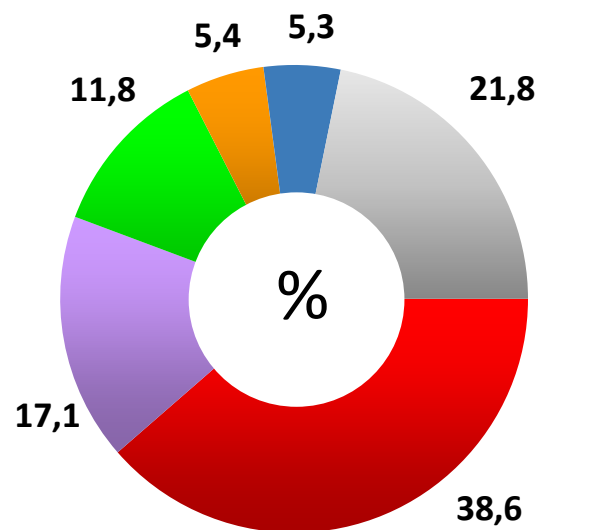
# VOLOGDA REGION



# GEOGRAPHICAL LOCATION

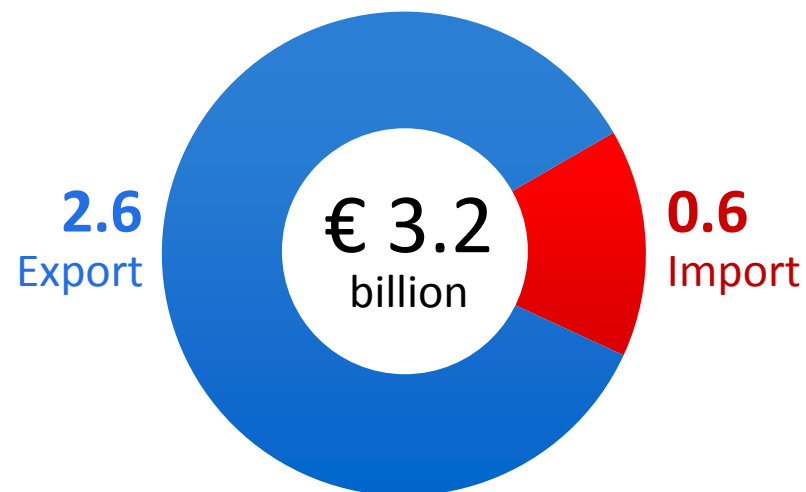


## VOLOGDA REGION GROSS REGIONAL PRODUCT STRUCTURE



- Manufacturing
- Transport and connection
- Wholesale and retail
- Real estate operations, rent and delivery of services
- Agriculture, hunting and forestry
- Other

## VOLOGDA REGION FOREIGN TRADE TURNOVER IN 2016



We cooperate with more than  
**100** countries of the world



**METALLURGY  
CLUSTER**

**CHEMICAL  
CLUSTER**

**REGIONAL  
ECONOMY  
PRIORITY  
DIRECTIONS**

**MACHINE  
MANUFACTURING  
CLUSTER**

**AGROFOOD CLUSTER**

**WOOD INDUSTRY  
CLUSTER**





# METALLURGY CLUSTER

**€ 19 billion**

REVENUE  
2014–2016

**€ 0.8 billion**

INVESTMENT VOLUME  
2014–2017

Every 6<sup>th</sup> ton of

RUSSIAN ROLLED METAL PRODUCTS

Every 6<sup>th</sup> ton of

RUSSIAN CAST IRON

**SMS group**

**SIEMENS**

**RUTGERS**

**AIR LIQUIDE**

## Projects

- Technical re-equipment of a four-stand cold mill
- Construction of the third plating complex

Industrial park  
“SHEKSNA”

In 2015 “Severstal” showed the highest profitability among the companies of ferrous metallurgy





# CHEMICAL CLUSTER

€ 8 billion

REVENUE  
2014–2016



€ 0.9 billion

INVESTMENT VOLUME

Every 8<sup>th</sup> ton of

RUSSIAN MINERAL FERTILIZERS

## Projects

- Construction of an energy efficient ammonia unit
- Production of granular carbamide
- Production of NPK fertilizers
- Production of ammonia sulfate



OJSC "PhosAgro-Cherepovets" is the largest exporter of phosphorus containing fertilizers in Russia





# WOOD INDUSTRY CLUSTER



**DIEFFENBACHER**



**Metsä**



**СВЕЗА**

International exhibition  
**“RUSSIAN WOOD”**

Every 10<sup>th</sup> m<sup>3</sup>

of wood

Every 11<sup>th</sup> m<sup>3</sup>

of plywood

Every 15<sup>th</sup> m<sup>3</sup>

of sawn-timber

**29.2**  
million m<sup>3</sup>  
**RATED**  
**WOOD**  
**CUTTING**

**3<sup>rd</sup> place**

in forest quality  
management

**Industrial park “SOKOL”**

Vologda region – is a leader in number of implemented priority investment projects in forest exploitation





# AGRO FOOD CLUSTER



**€ 0.5 billion**

**VOLUME OF AGRICULTURAL  
PRODUCE MANUFACTURING**

**0.5 million tons**

**OF MILK PRODUCTION**

**4<sup>th</sup> place in  
Russia**

**IN MILK PRODUCTION PER  
CAPITA**

**300 thousand ha**

**AVAILABLE FARM FIELDS**

3000 types of regional products are marked by trademark "Original Vologda product"





# MACHINE CONSTRUCTION CLUSTER



Shvabe



EVERY 3<sup>rd</sup> RUSSIAN BEARING IS PRODUCED IN THE VOLOGDA REGION



1<sup>st</sup> PLACE IN THE RF IN PRODUCTION OF SMALL AGRICULTURAL APPLICATION TRACTORS



Vologda  
machines

**BELARUS**  
MINSK TRACTOR WORKS







# TIMBER AND CHEMICAL CLUSTER



Anchor project

**CONSTRUCTION OF A PULP MILL**

**€ 1.5 billion** INVESTMENT VOLUME

**1200 tons per year** PRODUCTION CAPACITY

Projects of resident of a special economic zone

- Sawmill
- Pellets production
- Wooden houses producing plant
- Board production (plywood plant)
- Production of glued furniture board
- Production of fiber boards



# THE MOST ATTRACTIVE SEGMENTS OF THE RUSSIAN MARKET

**+6%**

growth by 2018 \*



**ADVANCED WOOD  
PROCESSING**

**+10%**

growth by 2018



**AGRICULTURE AND  
FOOD INDUSTRY**

**+17%**

growth by 2018



**PRODUCTION OF  
MEANS OF  
PRODUCTION**

**+20%**

growth by 2018



**MACHINE  
CONSTRUCTION**

\* SCENARIO OF THE RUSSIAN FEDERATION SOCIAL AND ECONOMIC DEVELOPMENT FOR 2016 AND PLANNED PERIOD 2017 AND 2018 ( the RF Ministry of economic development)



# VOLOGDA REGION INDUSTRIAL PARKS



Industrial park  
**"SHEKSNA"**



Metal working



Production of construction  
materials



Biotechnologies



Industrial park  
**"SOKOL"**



Wood working



Construction industry



Production of soft roofing  
insulation



Production of furniture  
and accessorize



Industrial parks  
**"VOLOGDA-VOSTOK"**  
**"VOLOGDA-ZAPAD"**  
**"VLOGDA-SEVER"**



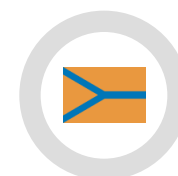
Wood working



Metal working



Food industry



Industrial park  
**"CHEREPOVETS"**



Production of modern  
materials



Metal working



Production of machine  
construction produce



Wood working

# VOLOGDA REGION INVESTMENT CLIMATE





# VOLOGDA REGION CULTURAL AND TOURIST POTENTIAL

Official partner



**Veliky Ustyug**  
– homeland of Father Frost



**Lace Museum**  
– one of the largest  
museums in the world



**Dionysius's frescoes**  
– a monument of  
UNESCO world heritage



**3 500**

OBJECTS OF CULTURAL HERITAGE

**762** of them are included in official  
Lists of historical and cultural monuments and  
are protected by the state



**199**

NATURE RESERVES

of federal, regional and local importance

# VOLOGDA REGION INSTITUTIONS OF DEVELOPMENT



## VOLOGDA REGION DEVELOPMENT CORPORATION

- Project management and consulting
- Investment activity
- Pledge activity
- Fundraising
- State assets management company



## VOLOGDA REGIONAL CENTRE OF ENTREPRENEURSHIP SUPPORT

- Tracking of projects in business cooperation
- Educational services and business consulting
- Cluster projects advance
- Development of regional export
- Engineering assistance for companies
- Introduction of biotechnologies in production
- Organization of business events

### The corporation portfolio:



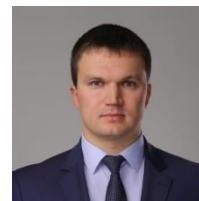
- **130** investment projects at different stages of implementation (business-ideas, development, implementation)
- **63 billion RUR** – investment volume

- **79 079 thousand RUR** – investment volume, raised for SMEs development in the Vologda region
- **3 467** unique receivers of state support
- **9 633** consult services
- **198** events for SMEs of the Vologda region





[vologda-oblast.ru](http://vologda-oblast.ru)



**ALEKSEY KOZHEVNIKOV**

Vologda region deputy Governor  
+7 (8172) 23-00-07



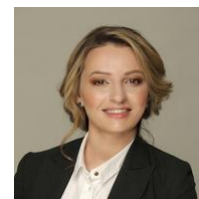
**YURY SENKO**

Acting head of the Vologda region  
Department of economics  
+7 (8172) 23-00-07



**OKSANA YAKOVLEVA**

Director general of JSC "Vologda region  
development corporation"  
+7 (8172) 74-21-04



**TATIANA KRITSKAYA**

Director of autonomous non-  
commercial organization "Regional  
centre of entrepreneurship support"  
+7 (8172) 72-00-20